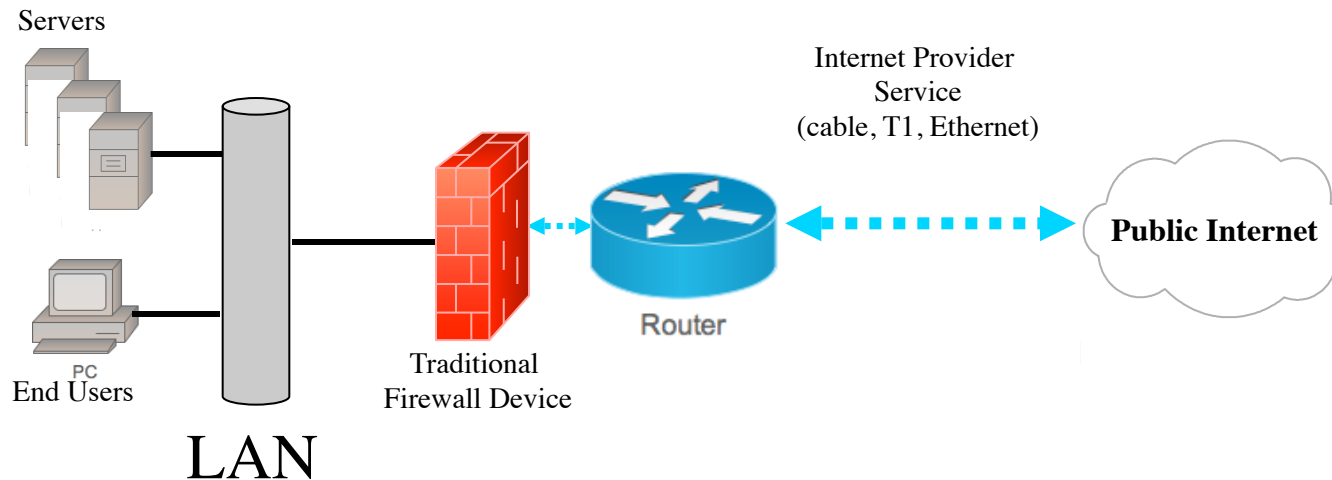


Traditional Firewall

Traditional Firewall and Internet Set Up

- on-site hardware firewall requires continual maintenance, software upgrades and testing
- primary Internet service flows through router into the firewall
- a traditional firewall can become a speed bottleneck during peak usage sessions
- if more speed is needed, more bandwidth must be ordered



Cloud Based Firewall

Cloud Based Firewall Example:

- 3MB Firewall is a lower cost than adding a 1.5MB T1
- additional speed comes standard with Network Firewall
- Security Features manage spamming and viruses before traffic gets to your office location
- Redundant Devices are in place for added reliability

